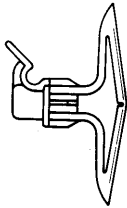


## TOGGLER<sup>®</sup> Brand Specialty Anchors from Mechanical Plastics Corp.

- ★ Work in any wall material
- ★ Self contained - no additional fixtures needed
- ★ Fast installation
- ★ Install with electric screw gun
- ★ All specialty anchors are made of a special polypropylene copolymer that is usable in any substrate

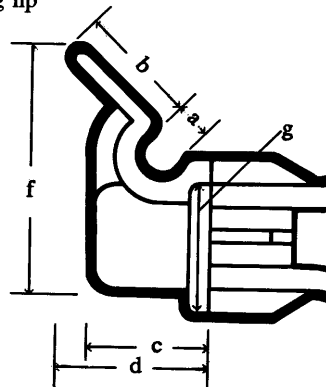
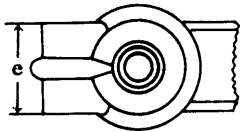
### PICTURE HOOK ANCHOR/ WIRE HOOK ANCHOR (TH<sup>®</sup>)



Built-in hook for hanging pictures, also for stringing telephone cable and household electrical wiring. Wire and cable are directly supported by the screw. The picture/wire hook anchor can be used without a screw for light applications (less than 10 lbs. [4.5 kilograms]) in a 3/8" - 1/2" wall grip range when toggled with supplied key into the fully open position. It requires 3/4" (19mm) hollow clearance. The convenient plastic lip guides the picture wire into place assuring easy, safe installation.

#### Dimensions:

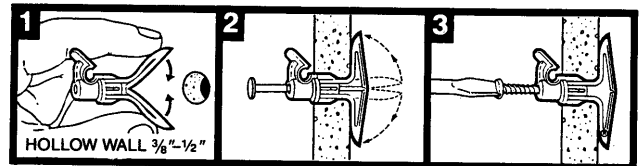
- a 0.15" (3.8mm) hook diameter (flexibility of plastic permits insertion of object of greater diameter)
- b 0.36" (8.9mm) long guiding lip
- c 0.34" (8.6mm) off wall
- d 0.44" (11.2mm) including lip
- e 0.31" (7.9mm) hook width
- f 0.77" (19.6mm) total height including lip
- g 0.46" (11.7mm) flange diameter



- Minimum wall grip range:
- Minimum screw length:
- Screw type:
- Minimum solid wall hole depth:

- 3/8 - 1/2" (9-13mm)
- 1 1/2" (38mm)
- #6 - 14 (3.5-6mm) sheet metal
- 1 1/4" (32mm)

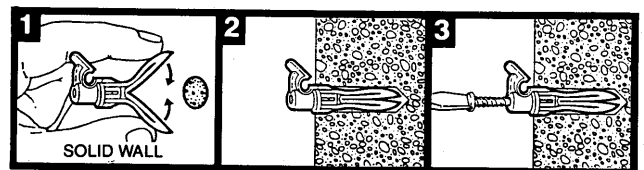
#### INSTRUCTIONS:



Drill a 5/16" (8mm) hole. Fold anchor, insert in hole and tap flush with wall.

Insert red key to pop anchor open behind wall (except in thick or solid walls). **Do not hammer or force key.** Remove key.

Insert screw and tighten until flush with hook anchor. Use any sheet metal screw from No. 6 (3.5mm) through No. 14 (6mm) with a minimum length of 1 1/2" (39mm).



All specialty anchors are installed in the same fashion for both hollow and solid wall applications.

Vertical wall: safe load weight up to 40 pounds (18 kilograms) per TH anchor